

# Internet Explorer Compatibility View

Previously the UC Learning Center required that Internet Explorer 10 and 11 (IE 10, IE 11) users have Compatibility View enabled in order to properly navigate the UC Learning Center. With the new upgrade the UC Learning Center is now able to support the latest browsers. IE 10 and 11 users are encouraged to turn off Compatibility View in order to best experience the UC Learning Center.

## Which version are you using?



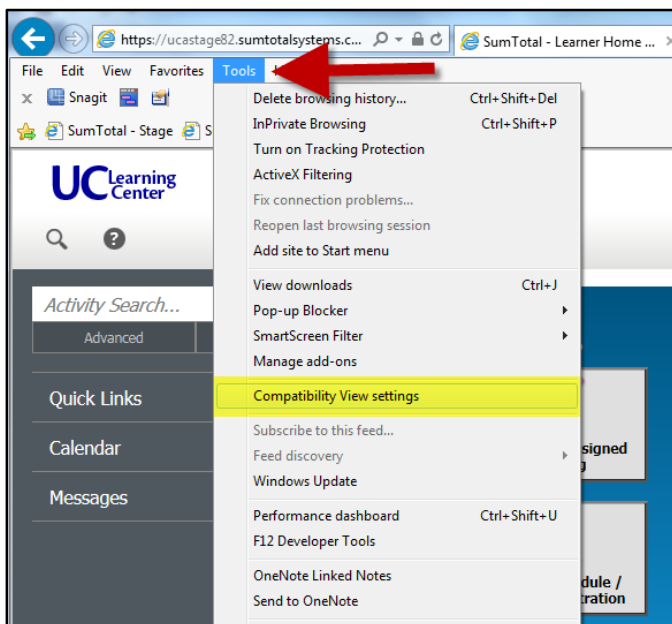
Open your Internet Explorer Browser. Click the **Help** tab and then click **About Internet Explorer**. This will tell you which version of Internet Explorer you are currently running. Note: In some versions of Internet Explorer you may find **About Internet Explorer** under **Tools** instead.

## Turning off Compatibility View:

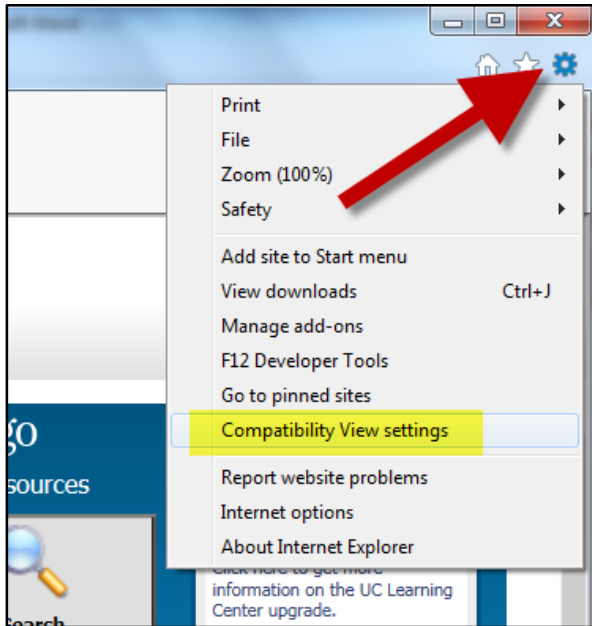
- [IE 11 Users](#)
- [IE 10 Users](#)

## Turning off Compatibility View in IE 11

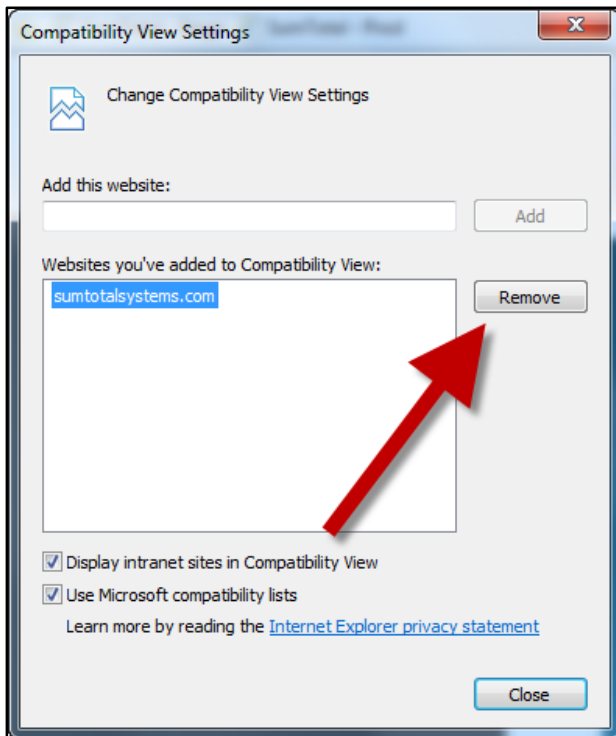
To turn off Compatibility View go to the **Tools** tab in your Menu Bar and click **Compatibility View Settings**



If you do not see the Menu Bar at the top of your browser you should be able to see the **Gear Icon** in the upper right hand corner. Click this then go to **Compatibility View Settings**.



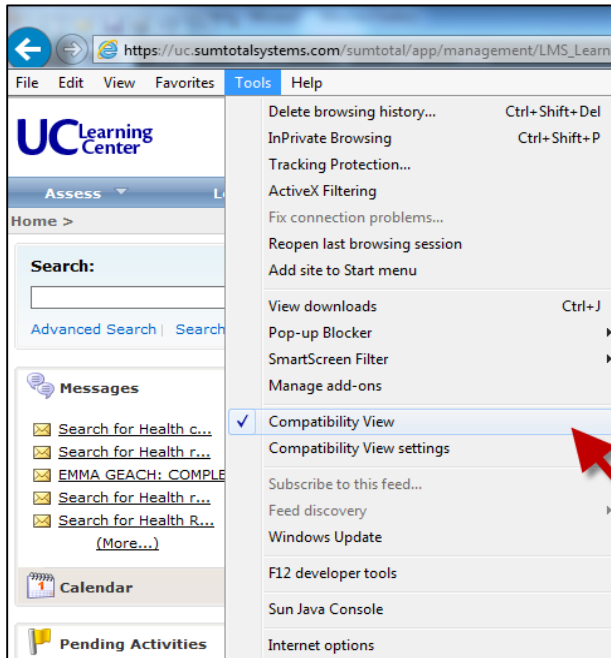
You will want to click **sumtotalsystems.com** and **Remove** it from your list of sites to display in compatibility view.



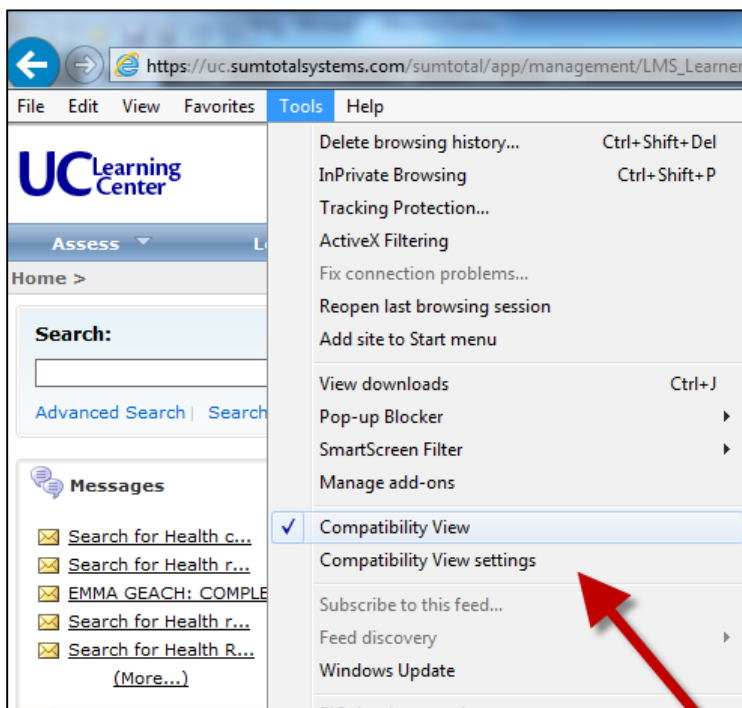
After you hit **Remove** click **Close**.

## Turning off Compatibility View in IE 10

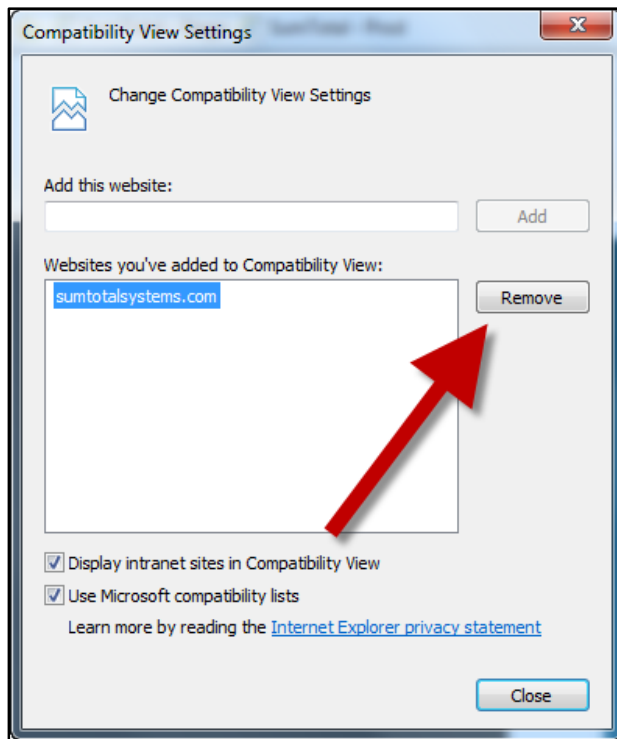
To turn off Compatibility View, login to the UC Learning Center and go to **Tools**, make sure there is no check next to **Compatibility View**. If there is, simply click **Compatibility View** to uncheck this selection.



You can also go to the **Compatibility View Settings**.



If you see **sumtotalsystems.com** you will want to select that and click **Remove**.



Once you are done select **Close**.